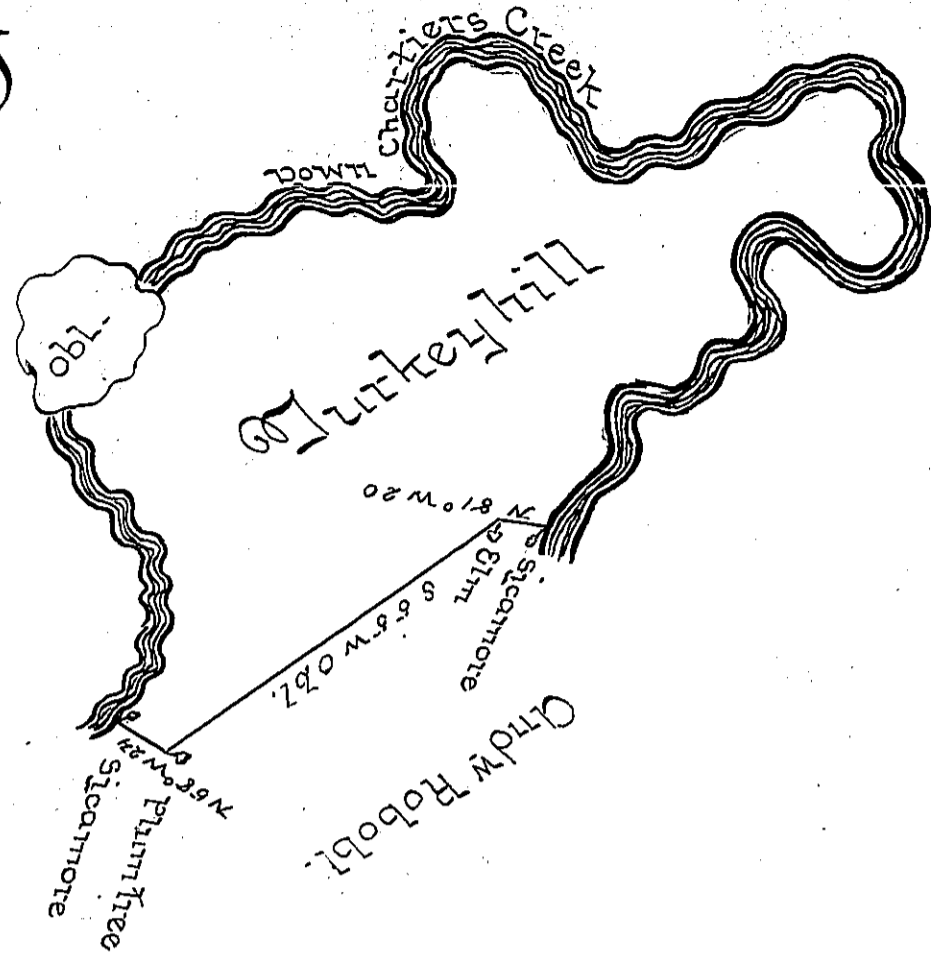


Courses down Char. Cr. }
 Beg. at a Sycamore & Run.

- N 78° E 30 P.
- N 02 7/8 -- 60 P.
- N 40 W 66 P.
- N 26° E 12 P.
- N 61 E 24 P.
- N 27 E 37 P.
- N 62 E 66 P.
- East --- 44 P.
- N 65 E 20 P.
- N 18 W 49 P.
- N 50 E 10 P.
- East --- 35 P.
- S 50 E 10 P.
- S 20 E 37 P.
- East --- 36 P.
- N 62 E 66 P.
- S 78 E 40 P.
- S 11 W 28 P.
- S 15 E 10 P.
- S 25 E 21 P.
- S 53 W 18 P.
- N 71 W 21 P.
- N 37 W 26 P.
- S 45 W 36 P.
- obliterated
- S 31 W 6 P.
- S 66 W 28 P.
- South --- 7 P.
- West --- 31 P.
- S 31 W 8 P.
- S 3 E 18 P.
- S 34 W 12 P.
- S 51 W 22 P.
- S 23 W 7 P.

To a Sycamore



In Pursuance of an order No 3347: doled 13th June 1769 the above is a Draught of a tract of land called Turkey Hill situated on the West side of Monongahala, contain obl. 242--0--27 acres with the usual allowance of 6 P.C. for Roads obl. Hways, &c. Survey'd for John Semple 30th October 1769. by James Hendricks.

John Lukens Esq: }
 Surveyor General }

IN TESTIMONY that the above is a copy of the original remaining on file in the Department of Internal Affairs of Pennsylvania, made conformably to an Act of Assembly approved the 16th day of February, 1833, I have hereunto set my Hand and caused the Seal of said Department to be affixed at Harrisburg, this

fourth day of January 1898.

James W. Latta
 Secretary of Internal Affairs.